

### LEGEND

- Existing 8' Houselight Can  
150w PAR38 Flood  
All Terminate at DP1 - Total 39
- Existing 8' Houselight Can  
150w PAR38 Flood  
Mounted underneath Catwalks  
All Terminate at DP1 - Total 15
- Existing 8' Houselight Can  
150w PAR38 Flood  
Terminate at DP1  
Also used for Egress  
wired to building Generator - Total 18

### NOTES

- (A) Existing Wall Dimmer  
Controls Houselights In Upper Entryway  
Also wired to Emergency Egress  
Building Generator Circuit E1-4
- (B) Existing Wall Dimmer  
Controls Houselights In Lower Vestibules  
Also wired to Emergency Egress  
Building Generator Circuit E1-4
- (C) Existing Disconnect for DP1  
200Amp Fused - Incoming lines capable of 300A
- (D) Existing Dimmer Panel  
DP1 - E1-120  
TTI @ 2.4kW ea.
- (E) Existing Key-covered Wall Switch  
Controls Upper level entryway houselights  
wired in series with Wall Dimmer (A) ?
- (F) Existing Breaker Panel - BP1  
200 Amp-3 Phase Feed
- (G) Existing Stage Manager's Panel  
EDI - 12 Channel
- (H) Existing Sound Equipment Rack  
Mounted 6'-4" clearance above stage floor

ISSUE/REVISIONS  
OCTOBER 10, 2006

**Visions in Light**  
2820 East Cove Ct.  
Maineville, Ohio 45039  
(513) 677-3999  
info@vilcreations.com  
www.vilcreations.com



**LIGHTING DESIGN**  
LEAD DESIGNER: JAMES H. GAGE  
PROJECT MANAGER / ASSISTANT  
DESIGNER: JONATHAN M. FUCHS  
DRAWN BY: JMF

**NOTES:**  
THIS DRAWING REPRESENTS VISUAL CONCEPTS AND CONSTRUCTION SUGGESTIONS ONLY. IT DOES NOT REPLACE THE KNOWLEDGE AND ADVICE OF A LICENSED STRUCTURAL ENGINEER. THE LIGHTING DESIGNER/CONSULTANT IS UNQUALIFIED TO DETERMINE THE STRUCTURAL OR ELECTRICAL REQUIREMENTS NECESSARY. ALL INSTALLATION CONCERNS ARE THE RESPONSIBILITY OF THE ELECTRICAL CONTRACTOR AND ARCHITECT DESIGN TEAM.

ANY QUESTIONS SHOULD BE DIRECTED TO COLE & RUSSELL ARCHITECTS.

**DISCLAIMER:**  
THIS DRAWING IS BASED ON ORIGINAL HAND DRAWINGS FROM 1973. DRAWING DIMENSIONS ARE NOT MEANT TO BE PRECISE, ONLY APPROXIMATIONS. ALL DIMENSIONS AND LENGTHS MUST BE FIELD-MEASURED AND APPROVED BY INSTALLER.

VISIONS IN LIGHT WILL NOT BE RESPONSIBLE FOR ANY MISCALCULATIONS OF DIMENSIONS BASED ON THESE DRAWINGS

THIS DOCUMENT IS THE PRODUCT AND EXCLUSIVE PROPERTY OF COLE + RUSSELL ARCHITECTS, INC. NEITHER THE DOCUMENT NOR THE INFORMATION IT CONTAINS MAY BE COPIED OR USED FOR OTHER THAN THE SPECIFIC PROJECT FOR WHICH IT WAS PREPARED WITHOUT THE EXPLICIT CONSENT OF COLE + RUSSELL ARCHITECTS, INC.

**Cole + Russell Architects**  
Architecture  
Engineering  
Interior Design  
Landscape Architecture  
Construction Administration

537 East Pete Rose Way, Suite 200  
Cincinnati, Ohio 45202  
(513) 721-8080

**PRELIMINARY**  
NOT FOR CONSTRUCTION

THIS DOCUMENT IS PARTIALLY COMPLETE. THE INFORMATION CONTAINED IS NOT NECESSARILY COORDINATED OR CORRECT. THIS DRAWING IS FOR REVIEW PURPOSES ONLY.

COMMISSION NO. **606016**

DATE **10-10-06**

TITLE  
**SYCAMORE SCHOOL DISTRICT SYCAMORE HIGH SCHOOL EXISTING HOUSE & STAGE WORKLIGHT LAYOUT**

SHEET **1** OF 7

LD **1** OF 7



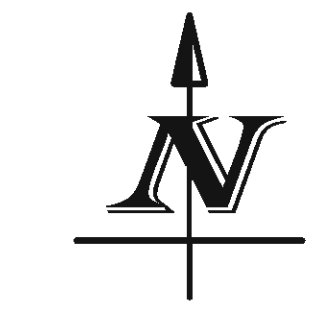
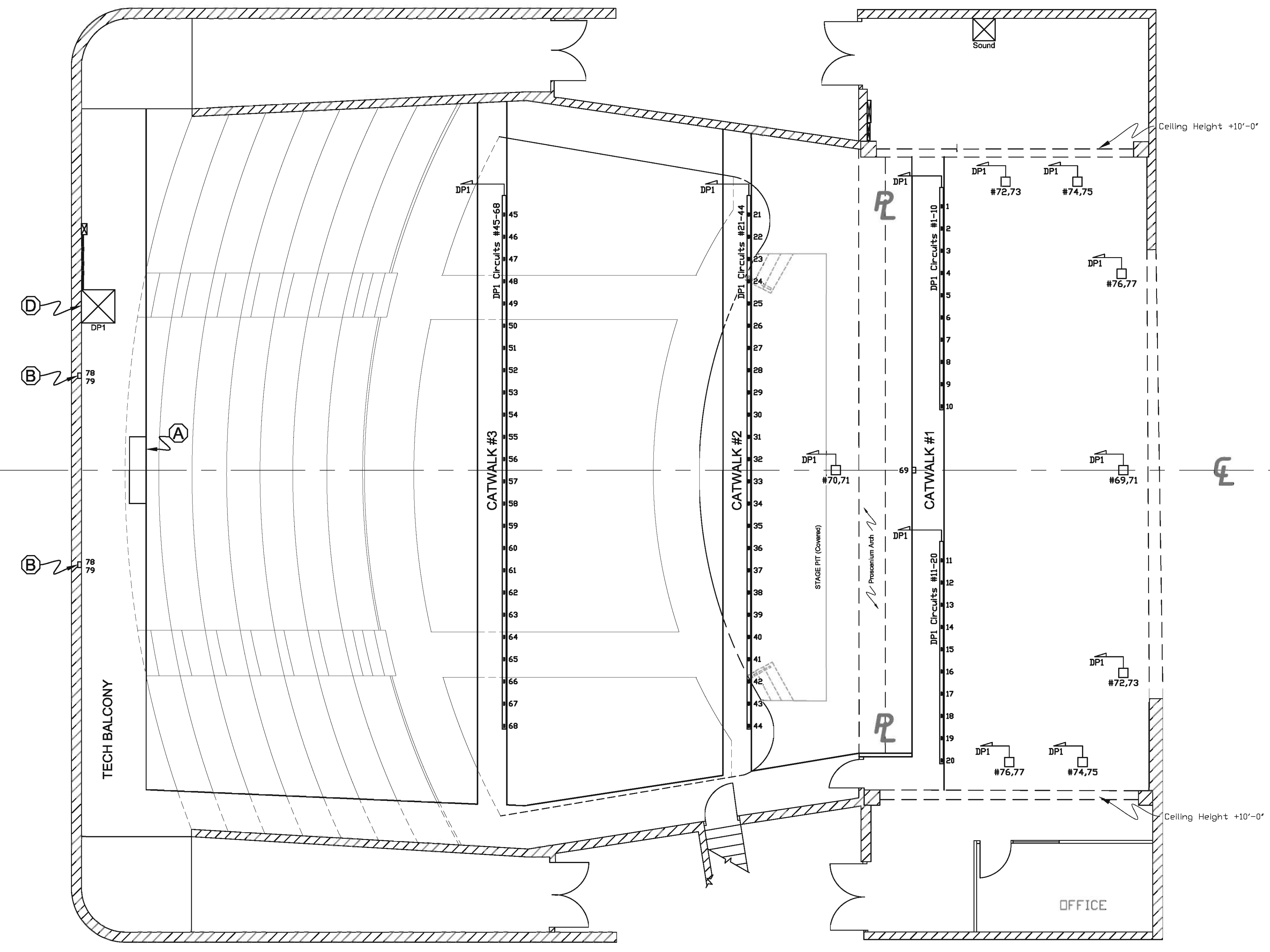
Scale:  
3/16" = 1'-0"

# LEGEND

**H 21** Existing Raceway Circuit Tail Stagepin type plug (2P&D) 20A Terminating in DP-1

# NOTES

- (A)** Existing Control Board - EDI Bijou Two (2) 5-pin DMX control Outputs Output #1 Connects directly to DP-1
- (B)** Existing Wall Pocket - DP1 #78, 79 Circuits Duplicate 1'-0" above Tech Balcony Floor
- (D)** Existing Dinner Panel DP-1 - #1-120 TTI @ 2.4kW ea.



Scale:  
3/16" = 1'-0"

ISSUE/REVISIONS  
OCTOBER 18, 2006

## Visions in Light

2820 East Cove Ct.  
Maineville, Ohio 45039  
(513) 677-3999  
info@vilcreations.com  
www.vilcreations.com



**LIGHTING DESIGN**  
LEAD DESIGNER: JAMES H. GAGE  
PROJECT MANAGER / ASSISTANT DESIGNER: JONATHAN M. FUCHS  
DRAWN BY: JMF

**NOTES:**  
THIS DRAWING REPRESENTS VISUAL CONCEPTS AND CONSTRUCTION SUGGESTIONS ONLY. IT DOES NOT REPLACE THE KNOWLEDGE AND ADVICE OF A LICENSED ENGINEER. THE LIGHTING DESIGNER/CONSULTANT IS UNQUALIFIED TO DETERMINE THE STRUCTURAL OR ELECTRICAL REQUIREMENTS NECESSARY. ALL INSTALLATION CONCERNS ARE THE RESPONSIBILITY OF THE ELECTRICAL CONTRACTOR AND ARCHITECT DESIGN TEAM.

ANY QUESTIONS SHOULD BE DIRECTED TO COLE & RUSSELL ARCHITECTS.

**DISCLAIMER:**  
THIS DRAWING IS BASED ON ORIGINAL HAND DRAWINGS FROM 1973. DRAWING DIMENSIONS ARE NOT MEANT TO BE PRECISE, ONLY APPROXIMATIONS. ALL DIMENSIONS AND LENGTHS MUST BE FIELD-MEASURED AND APPROVED BY INSTALLER.

VISIONS IN LIGHT WILL NOT BE RESPONSIBLE FOR ANY MISCALCULATIONS OF DIMENSIONS BASED ON THESE DRAWINGS

THIS DOCUMENT IS THE PRODUCT AND EXCLUSIVE PROPERTY OF COLE + RUSSELL ARCHITECTS, INC. NEITHER THE DOCUMENT NOR THE INFORMATION IT CONTAINS MAY BE COPIED OR USED FOR OTHER THAN THE SPECIFIC PROJECT FOR WHICH IT WAS PREPARED WITHOUT THE EXPLICIT CONSENT OF COLE + RUSSELL ARCHITECTS, INC.

Cole + Russell Architects



Architecture  
Engineering  
Interior Design  
Landscape Architecture  
Construction Administration

537 East Pate Rose Way, Suite 200  
Cincinnati, Ohio 45202  
(513) 721-8080

# PRELIMINARY

NOT FOR CONSTRUCTION

THIS DOCUMENT IS PARTIALLY COMPLETE. THE INFORMATION CONTAINED IS NOT NECESSARILY COORDINATED OR CORRECT. THIS DRAWING IS FOR REVIEW PURPOSES ONLY.

COMMISSION NO. 606016

DATE 10-18-06

TITLE SYCAMORE SCHOOL DISTRICT SYCAMORE HIGH SCHOOL

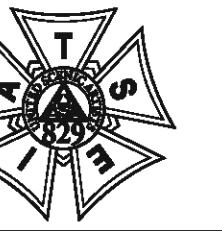
EXISTING STAGE CIRCUITS

SHEET LD **2** OF 7

# Visions in Light

2820 East Cove Ct.  
Maineville, Ohio 45039  
(513) 677-3999  
info@vilcreations.com

www.vilcreations.com



## LIGHTING DESIGN

LEAD DESIGNER: JAMES H. GAGE  
PROJECT MANAGER / ASSISTANT DESIGNER: JONATHAN M. FUCHS  
DRAWN BY: JMF

### NOTES:

**THIS DRAWING REPRESENTS VISUAL CONCEPTS AND CONSTRUCTION SUGGESTIONS ONLY. IT DOES NOT REPLACE THE KNOWLEDGE AND ADVICE OF A LICENSED ENGINEER. THE LIGHTING DESIGNER/CONSULTANT IS UNQUALIFIED TO DETERMINE THE STRUCTURAL OR ELECTRICAL REQUIREMENTS NECESSARY. ALL INSTALLATION CONCERNS ARE THE RESPONSIBILITY OF THE ELECTRICAL CONTRACTOR AND ARCHITECT DESIGN TEAM.**

ANY QUESTIONS SHOULD BE DIRECTED TO COLE + RUSSELL ARCHITECTS.

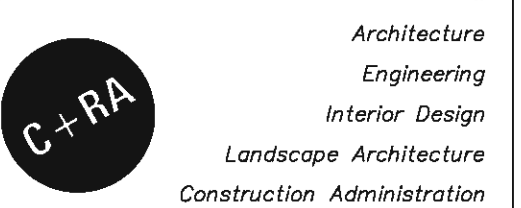
### DISCLAIMER:

**THIS DRAWING IS BASED ON ORIGINAL HAND DRAWINGS FROM 1973. DRAWING DIMENSIONS ARE NOT MEANT TO BE PRECISE, ONLY APPROXIMATIONS. ALL DIMENSIONS AND LENGTHS MUST BE FIELD-MEASURED AND APPROVED BY INSTALLER.**

**VISIONS IN LIGHT WILL NOT BE RESPONSIBLE FOR ANY MISCALCULATIONS OF DIMENSIONS BASED ON THESE DRAWINGS**

THIS DOCUMENT IS THE PRODUCT AND EXCLUSIVE PROPERTY OF COLE + RUSSELL ARCHITECTS, INC. NEITHER THE DOCUMENT NOR THE INFORMATION IT CONTAINS MAY BE COPIED OR USED FOR OTHER THAN THE SPECIFIC PROJECT FOR WHICH IT WAS PREPARED WITHOUT THE EXPLICIT CONSENT OF COLE + RUSSELL ARCHITECTS, INC.

Cole + Russell Architects



Architecture  
Engineering  
Interior Design  
Landscape Architecture  
Construction Administration

537 East Pete Rose Way, Suite 200  
Cincinnati, Ohio 45202  
(513) 721-8080

# PRELIMINARY

NOT FOR CONSTRUCTION

THIS DOCUMENT IS PARTIALLY COMPLETE. THE INFORMATION CONTAINED IS NOT NECESSARILY COORDINATED OR CORRECT. THIS DRAWING IS FOR REVIEW PURPOSES ONLY.

COMMISSION NO. 606016

DATE 10-18-06

TITLE SYCAMORE SCHOOL DISTRICT SYCAMORE HIGH SCHOOL LIGHTING DEMOLITIONS

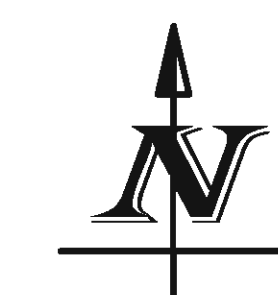
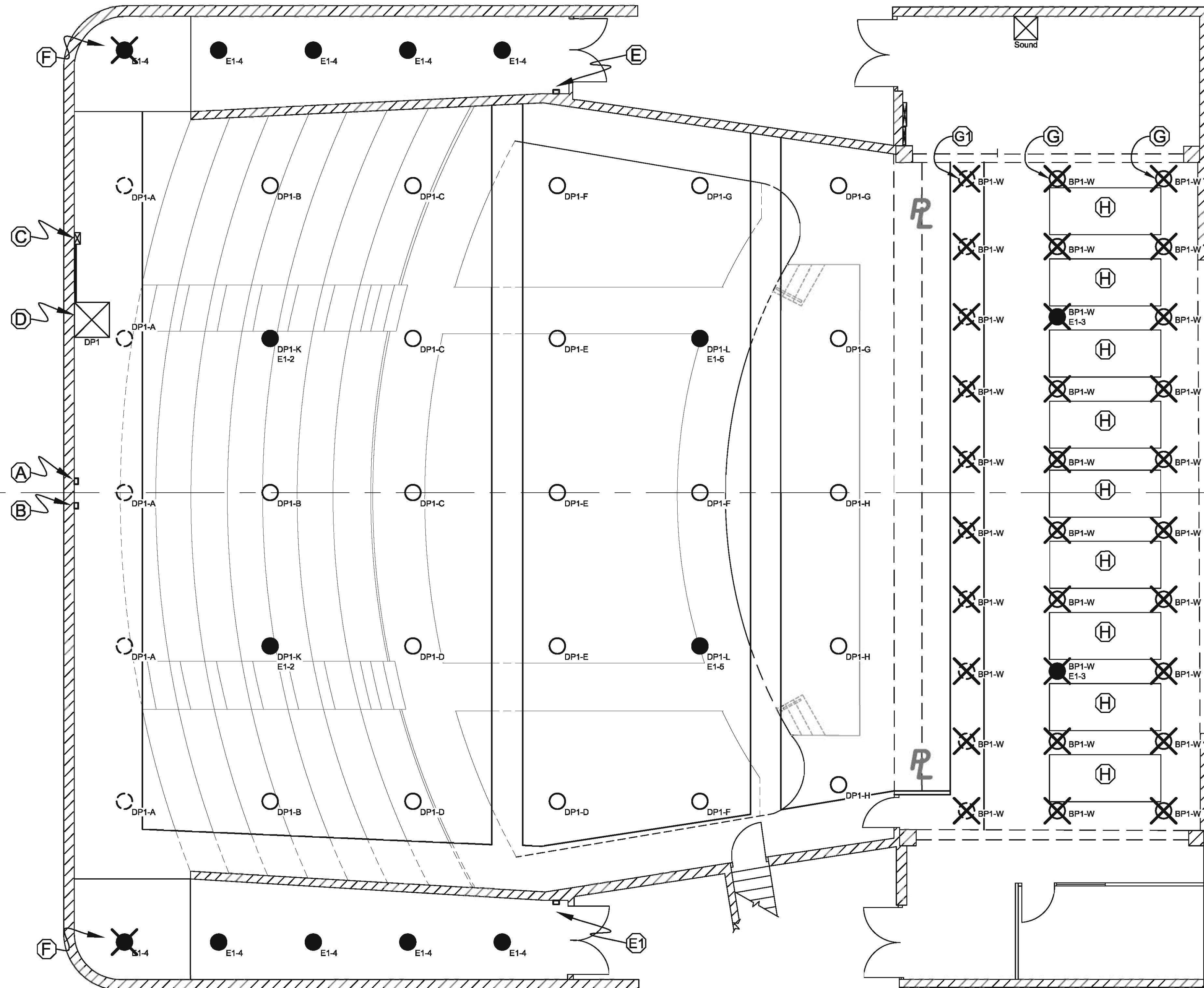
SHEET **3** OF 7  
LD

## LEGEND

- Existing 8" Houselight Can  
150w PAR38 Flood  
All Terminate at DP1 - Total 21
- Existing 8" Houselight Can  
150w PAR38 Flood  
Mounted Underneath Catwalks  
All Terminate at DP1 - Total 5
- Existing 8" Houselight Can  
150w PAR38 Flood  
Terminate at DP1  
Also used for Egress  
wired to building Generator - Total 12
- ⊗ Existing 8" Houselight Can  
150w PAR38 Flood  
REMOVE Fixture & Mounting hardware - Total 18
- ⊗ Existing 8" Houselight Can  
150w PAR38 Flood  
Mounted underneath Catwalks  
REMOVE Fixture & Mounting hardware - Total 10
- ⊗ Existing 8" Houselight Can  
150w PAR38 Flood  
Also used for Egress  
REMOVE Fixture & Mounting hardware - Total 4  
NOTE: Circuit E1-3 is re-used - see plate 4

## NOTES

- (A) Existing Wall Dimmer - REMOVE  
Controls Houselights in Upper Entryway  
Re-wire to bypass dimmer for always-on.  
Cover Box.
- (B) Existing Wall Dimmer  
Controls Houselights in Lower Vestibules  
REMOVE DIMMER - WIRING REMAINS - see additions
- (C) Existing Disconnect for BP1  
200Amp Fused - Incoming wiring capable of 300A  
REMOVE Box - See Additions
- (D) Existing Dimmer Panel  
DP1 - #1-120  
TTI @ 2.4kW ea.  
REMOVE - See Additions
- (E) Existing Switch - Re-wire to bypass switch for  
always-on  
See additions for switch re-use
- (E1) Existing Switch - REMOVE  
Re-wire to bypass switch for always-on.  
Cover box.
- (F) Replace Ceiling Tile to match existing (2)
- (G) Remove all 20 canlights over stage  
Emergency Egress circuit E1-3 to be re-used  
See Additions  
Save Four (4) for aisle in back of house, to be  
mounted under tech balcony
- (G1) Remove all 10 canlights over stage  
Keep Conduit and Wiring for Two (2) 20Amp Circuits  
to become BP1-W1 (Works 1) & W2 (Works 2)  
See Additions
- (H) Remove ALL existing Acoustical Paneling  
DEM'D BY DIMMER PRIOR TO EC ARRIVAL  
Dimmer will designate storage or Disposal  
Remove all chain and hardware



Scale:  
3/16" = 1'-0"

# Visions in Light

2820 East Cove Ct.  
Maineville, Ohio 45039  
(513) 677-3999  
info@vcreations.com

www.vcreations.com



## LIGHTING DESIGN

LEAD DESIGNER: JAMES H. GAGE  
PROJECT MANAGER / ASSISTANT DESIGNER: JONATHAN M. FUCHS  
DRAWN BY: JMF

### NOTES:

THIS DRAWING REPRESENTS VISUAL CONCEPTS AND CONSTRUCTION SUGGESTIONS ONLY. IT DOES NOT REPLACE THE KNOWLEDGE AND ADVICE OF A LICENSED ENGINEER. THE LIGHTING DESIGNER/CONSULTANT IS UNQUALIFIED TO DETERMINE THE STRUCTURAL OR ELECTRICAL REQUIREMENTS NECESSARY. ALL INSTALLATION CONCERNS ARE THE RESPONSIBILITY OF THE ELECTRICAL CONTRACTOR AND ARCHITECT DESIGN TEAM.

ANY QUESTIONS SHOULD BE DIRECTED TO COLE & RUSSELL ARCHITECTS.

### DISCLAIMER:

THIS DRAWING IS BASED ON ORIGINAL HAND DRAWINGS FROM 1973. DRAWING DIMENSIONS ARE NOT MEANT TO BE PRECISE, ONLY APPROXIMATIONS. ALL DIMENSIONS AND LENGTHS MUST BE FIELD-MEASURED AND APPROVED BY INSTALLER.

VISIONS IN LIGHT WILL NOT BE RESPONSIBLE FOR ANY MISCALCULATIONS OF DIMENSIONS BASED ON THESE DRAWINGS

THIS DOCUMENT IS THE PRODUCT AND EXCLUSIVE PROPERTY OF COLE & RUSSELL ARCHITECTS, INC. NEITHER THE DOCUMENT NOR THE INFORMATION IT CONTAINS MAY BE COPIED OR USED FOR OTHER THAN THE SPECIFIC PROJECT FOR WHICH IT WAS PREPARED WITHOUT THE EXPLICIT CONSENT OF COLE & RUSSELL ARCHITECTS, INC.

Cole + Russell Architects

Architecture  
Engineering  
Interior Design  
Landscape Architecture  
Construction Administration

537 East Pete Rose Way, Suite 200  
Cincinnati, Ohio 45202  
(513) 721-8080

# PRELIMINARY

## NOT FOR CONSTRUCTION

THIS DOCUMENT IS PARTIALLY COMPLETE. THE INFORMATION CONTAINED IS NOT NECESSARILY COORDINATED OR CORRECT. THIS DRAWING IS FOR REVIEW PURPOSES ONLY.

COMMISSION NO.  
**606016**

DATE  
**10-18-06**

TITLE  
**SYCAMORE SCHOOL DISTRICT SYCAMORE HIGH SCHOOL**

ELECTRICAL ADDITIONS

SHEET  
**LD 4 OF 7**

## LEGEND

- Existing 8' Houselight Can  
250w PAR38 Flood  
All Re-Terminate at DP1 - Total 20
- Existing 8' Houselight Can  
90w PAR38 Flood  
Mounted Under Castalk  
Re-Terminate at DP1 - Total 5
- Existing 8' Houselight Can  
250w PAR38 Flood  
Re-Terminate at DP1  
Also currently used for Egress  
wired to building Generator - Total 4
- New Houselight Can -  
Re-use cans that were removed from over stage  
90w PAR38 Flood  
wired into existing wires terminating at DP-1 -  
Total 2
- New Houselight Can -  
Re-use cans that were removed from over stage  
90w PAR38 Flood  
new circuit run through existing conduit  
terminating at DP-1  
Also used for Egress and wired into building  
Generator - Total 2
- Existing Houselight Can - Total 8  
Replace existing Lamp with Spiral 9w 2700K  
Self-Balancing Compact Fluorescent-TCP #190009
- Existing Houselight Can - Total 2  
Replace existing Lamp with 90w PAR38 FLOOD
- NEW - 6" Recessed canlight -  
HALO H77-30 PAT / 90w PAR38 FLOOD MSB  
Wired for Egress - Circuit taken from  
overstage egress E1-3 - Total 2  
DR Equivalent Kurt Versen or Prescolite
- ALTERNATE New Track Light w/ Fixture:  
HALO Cat# L1753P  
150w TH Frosted Lamp - Total 6  
DR Equivalent Kurt Versen or Prescolite
- New Aisle Light ETC Source Four Jr. 50" Lens,  
375w/115v X (Long Life) Lamp, City Theatrical  
#2250 Donut Accessory - Total 12  
DR Equivalent Strand or Altman
- New Stage Work Light: Altman PAR64  
Q1000 PAR64/WFL 1000w ea. - Total 4  
DR Equivalent City Theatrical or L&E
- New Stage Work Light: Altman Mini-10 Floodlight  
w/ Barndoors, FCL Q500 T3/CL lamp - Total 4  
DR Equivalent Strand, L&E, or City Theatrical
- New Ghost Light - Altman PAR38 MSB  
Lamp with 250w PAR38 FLOOD - Total 1  
DR Equivalent L&E or City Theatrical

## NOTES

ALL existing House and Egress Lights not otherwise specified MUST be lamped with PAR38 250w FLOOD  
ALL WIRING SPECS BY ENGINEER

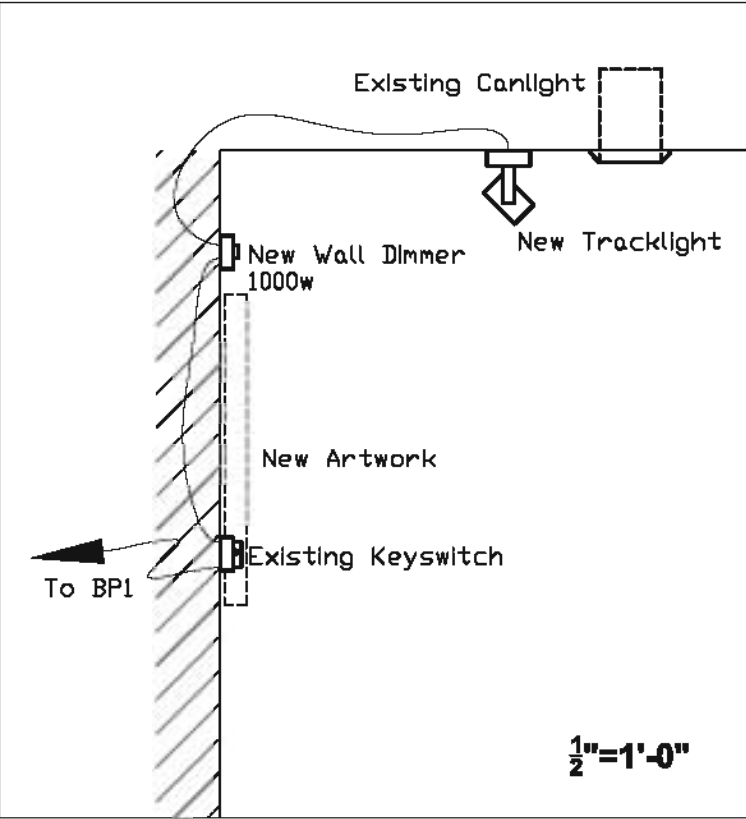
- (A) Remove Existing "Upper Level" Wall Dimmer, Re-wire to bypass dimmer for Always-on. Cover Box.
- (B) Remove Existing "Lower Level" Wall Dimmer Rewire directly to DP1-M
- (C) New Disconnect - 300Amp Fused 3 phase / 4 Wire
- (D) New Dimmer Panel  
DP1 - #1-96  
EDI MX Mark 10 Rack - 2.4kw/ea  
Dimmers must have 800microsec. Rise Time  
DR ETC or Strand AS EQUAL - MFR. MUST MATCH (H)
- (E) New Remote Entry Stations - ES  
EDI Mark 10 Remote - 300 Series 2-Button Dn/OFF  
Wired with 18ga. /3 cond. in sequential chain  
Terminating in DP1  
Pending Final Contract with EDI, Strand or ETC
- (F) Same as (F) Above, except 3-button with Dn/OFF/Lockout (Take Control)  
Precise Placement TBD
- (G) New Stage Circuit Box - 12 Circuits  
SSRC Mfg. - Stagepin CP&G receptacles  
Dimmers Fed from DP-2  
Mounted 21'-0" above Stage Floor  
See Detail
- (H) New Dimmer Panel - DP2 - EDI DIMMEX 12-2  
12 Channel 2.4kw ea.  
DR ETC or Strand AS EQUAL - MFR. MUST MATCH (D)  
PURCHASE BY DWNER, INSTALL BY EC  
Obtain Power from BPI - 80amp 3ø/4w/0  
NBT wired through existing connectors  
Run Control Cable DMX-512 to DP1 "thru"  
Mounted minimum 6'-4" above stage
- (J) Existing Houselight Can  
Re-Lamp with Compact Fluorescent  
Re-wired for always-on w/Timer (A)
- (L) Add Fixtures to existing row  
(counted under tech balcony)  
Wired to same circuit as existing fixtures
- (M) Add Fixtures to existing row  
(counted under tech balcony)  
Wired to Dimmers and Emergency Relay E1-2
- (N) New Stage Worklights  
PAR64 WFL 500w, L5-20 Plug Type  
New Circuit Run to DP1 - See Detail  
Fixtures by Dwner
- (P) New Aisle Lighting ETC Source Four Jr.  
6 per circuit, Total Load 2250w/cikt, L5-20 Plug  
wired to emergency lighting relay  
Fixtures by Dwner.  
New circuit Run to DP1 - See Detail
- (Q) New Stage Worklights: Mounted on Sidern  
Mini-10 Floodlight with Barndoors  
Fed from BPI-V1 & V2, L5-20 Twistlok connector  
Fixtures by Dwner. See Detail.
- (R) New Worklight Circuits - BPI-V1 & V2  
L5-20 Twistlok Receptacle wired from old Circuit  
under Castalk 1  
To Utilize existing Relay connector
- (S) New Ghost Light - Altman PAR38 250w SP MSB  
L5-20 Twistlok Plug, new circuit home run to DP1  
Hung on Tech Balcony Railing - Fixture by Dwner
- (X) New Egress Light - 6" Recessed Canlight Mounted  
in ceiling near existing doors. Emergency Egress  
circuit E1-3 taken from denoted onstage circuit
- (Z) ALL EXISTING EMERGENCY LIGHTS AND EXIT SIGNS  
MUST BE RE-WIRED TO CONSTANT POWER  
- Current Status in question  
Total Number and Placement currently uncertain

## ALTERNATES

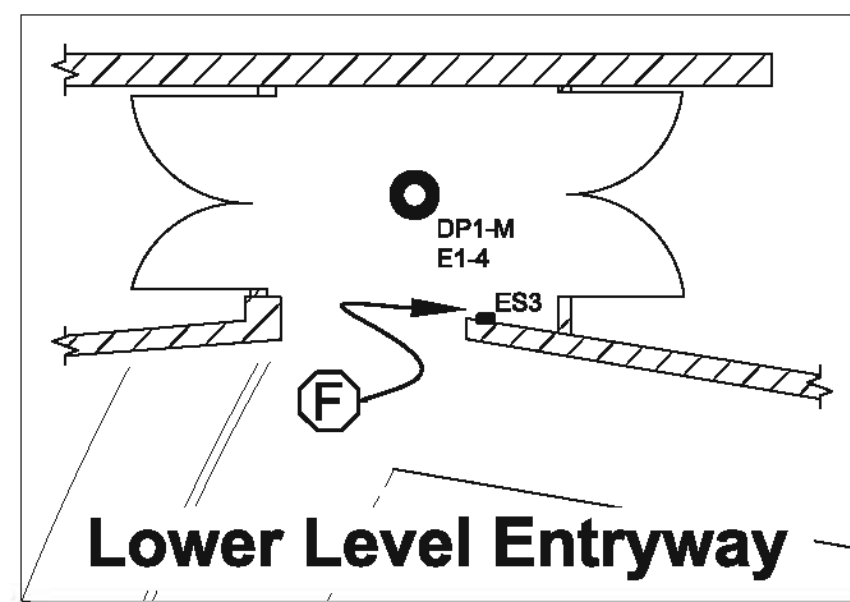
All Alternates MUST be called out with Specific Dollar amount cost.

- (E4) Add New Wall Dimmer - 1000w  
Mounted 78" from floor wired in series with  
Existing Key Lockout Switch for  
New Track Light Control -  
Obtain Power from BPI  
See Detail K
- (E5) ADD 3 Sections of 8' Track Lighting with Six (6)  
fixtures:  
Type: HALO Cat# L1753P  
150w TH Frosted Lamp Wired to VDI  
Precise Placement TBD onsite  
All Power End Connectors by EC
- (E6) New DMX Optosplitter  
Wired From Control Board Output #2  
Outputs to catwalk receptacles (T)  
Doug Fleenor Design Model 125-S
- (E7) New DMX-512 5-Pin(F) Data Output Box (total 2)  
Using Belden #9829 DMX cable  
New Disconnect / Company Switch  
3 phase / 5 wire Canlok connector panel  
100Amps - Service Feed from BPI  
NBT wired through Existing Connectors  
SSRC #DS-100A-SV-C
- (E8) New Circuit Boxes on Catwalk 2 - 6 Circuits ea.  
SSRC Mfg. - Stagepin (CP&G) Tails - 18" Long  
Dimmers Fed from DP-1 - Circuits duplicate L&R  
Mounted in line with existing Circuit Boxes

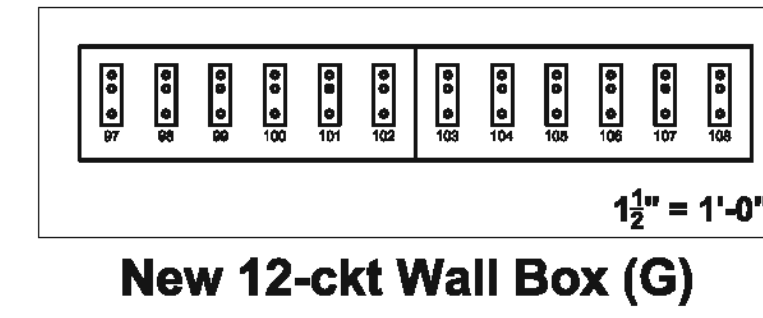
Scale:  
3/16" = 1'-0"



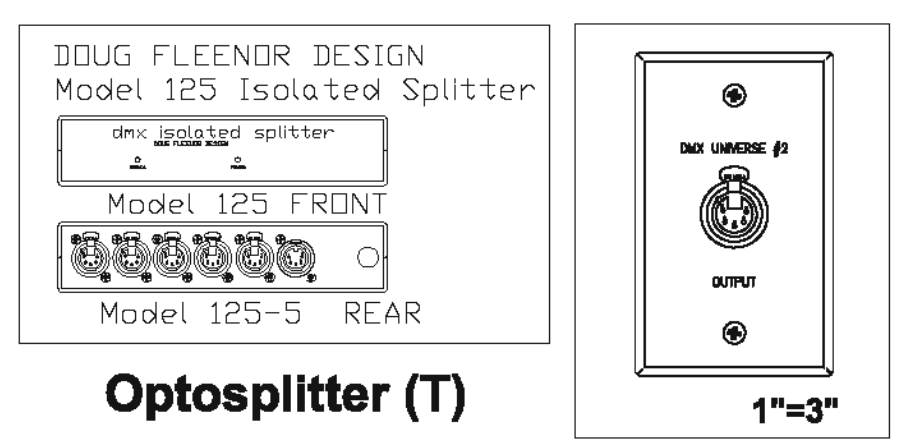
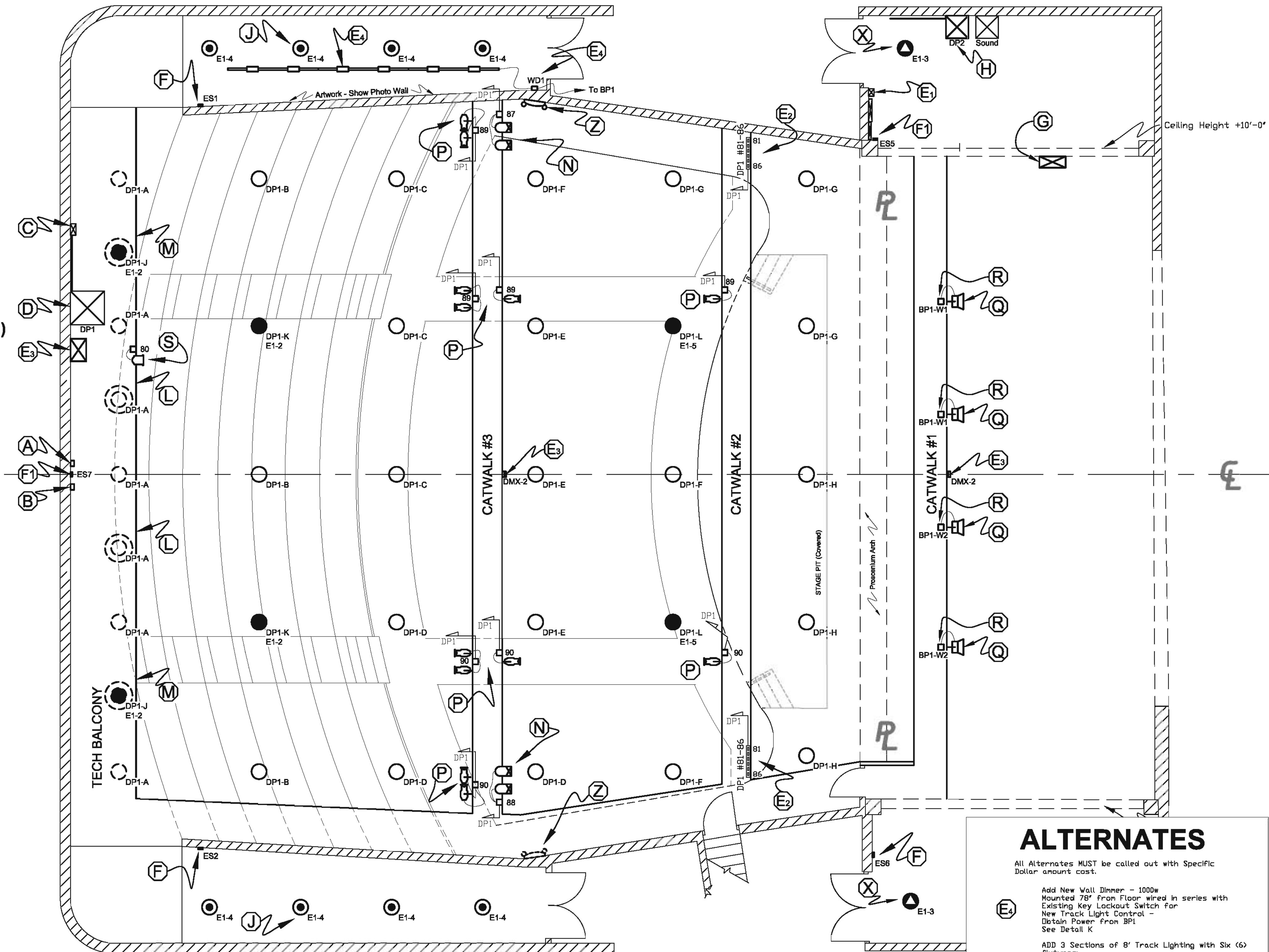
Detail view of new Aisle Light Hanger (Total 10) (P)



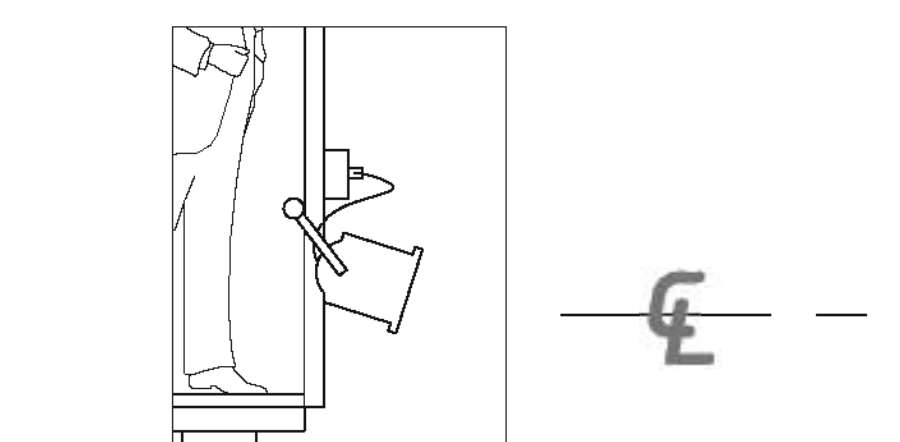
Lower Level Entryway



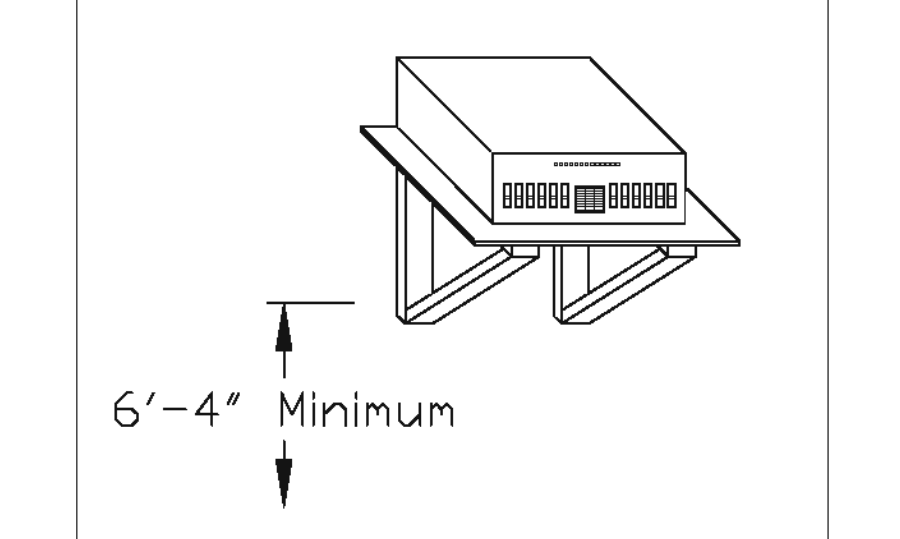
New 12-ckt Wall Box (G)



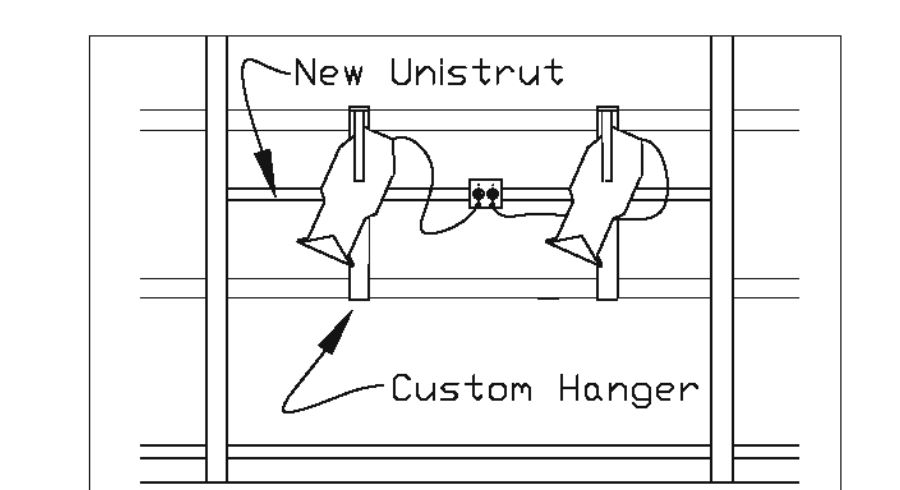
Optosplitter (T) DMX Output (U)



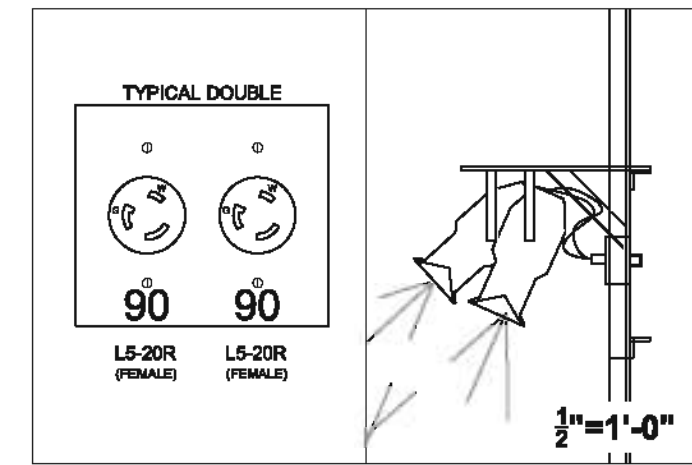
New Ghost Light (S)



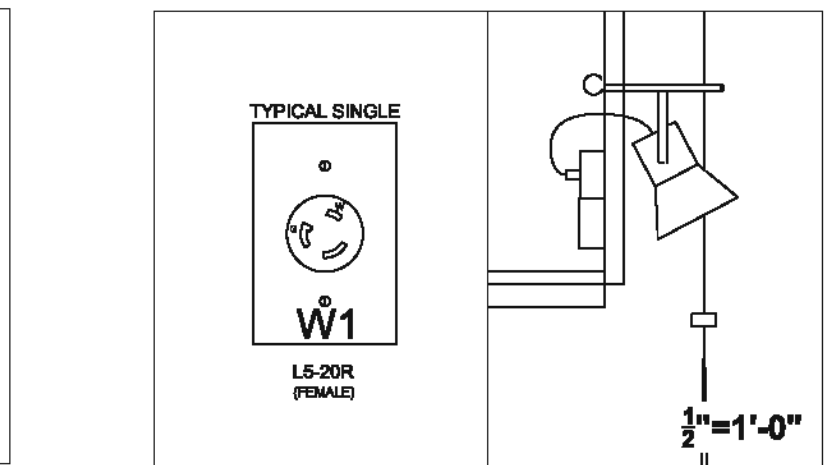
DP2 Mounting Platform Suggestion (H)



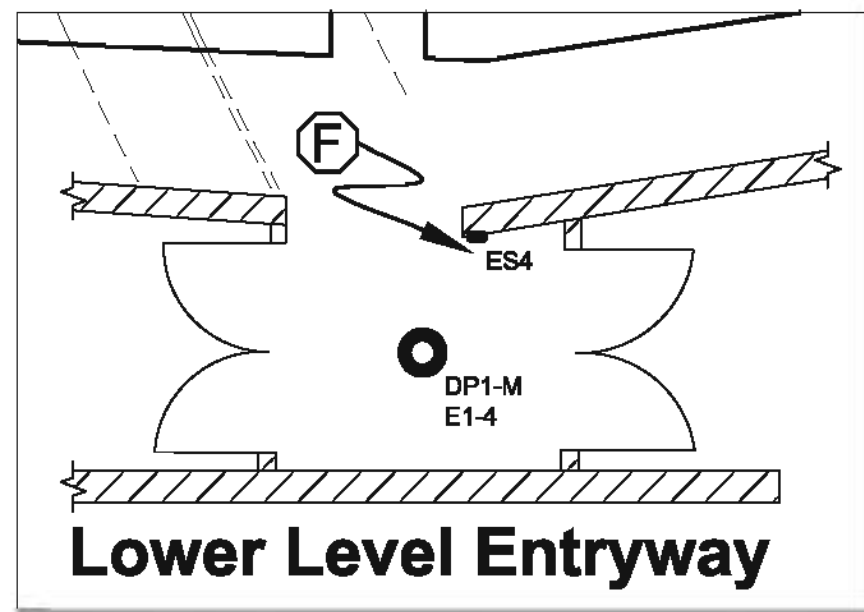
Elevation of Typical Aisle Light Mounting and Circuit (P)



Aisle Light Mounting and Double Outlet Box (P)

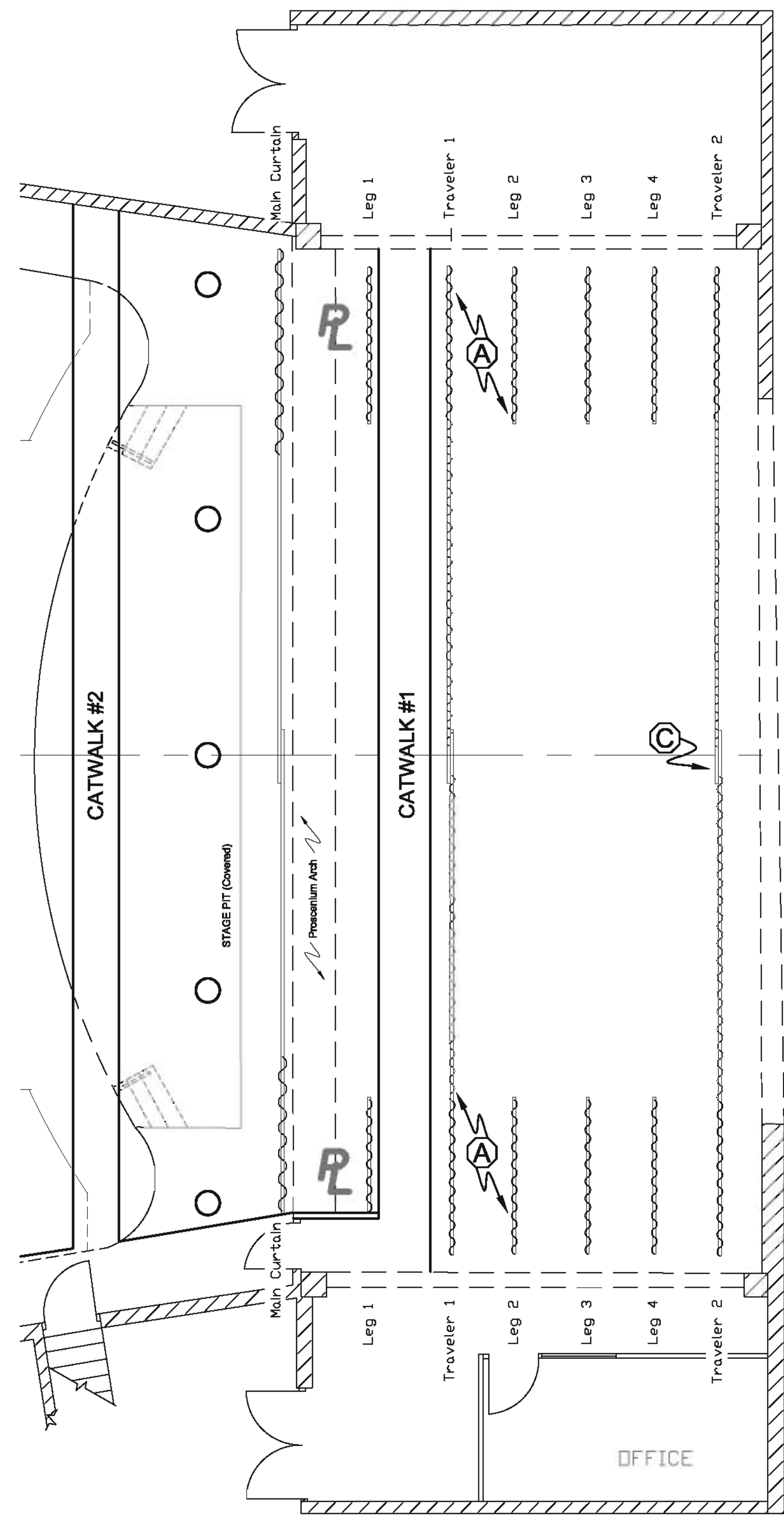


Stage Work Light Mounting and Single Outlet Box (Q)



Lower Level Entryway

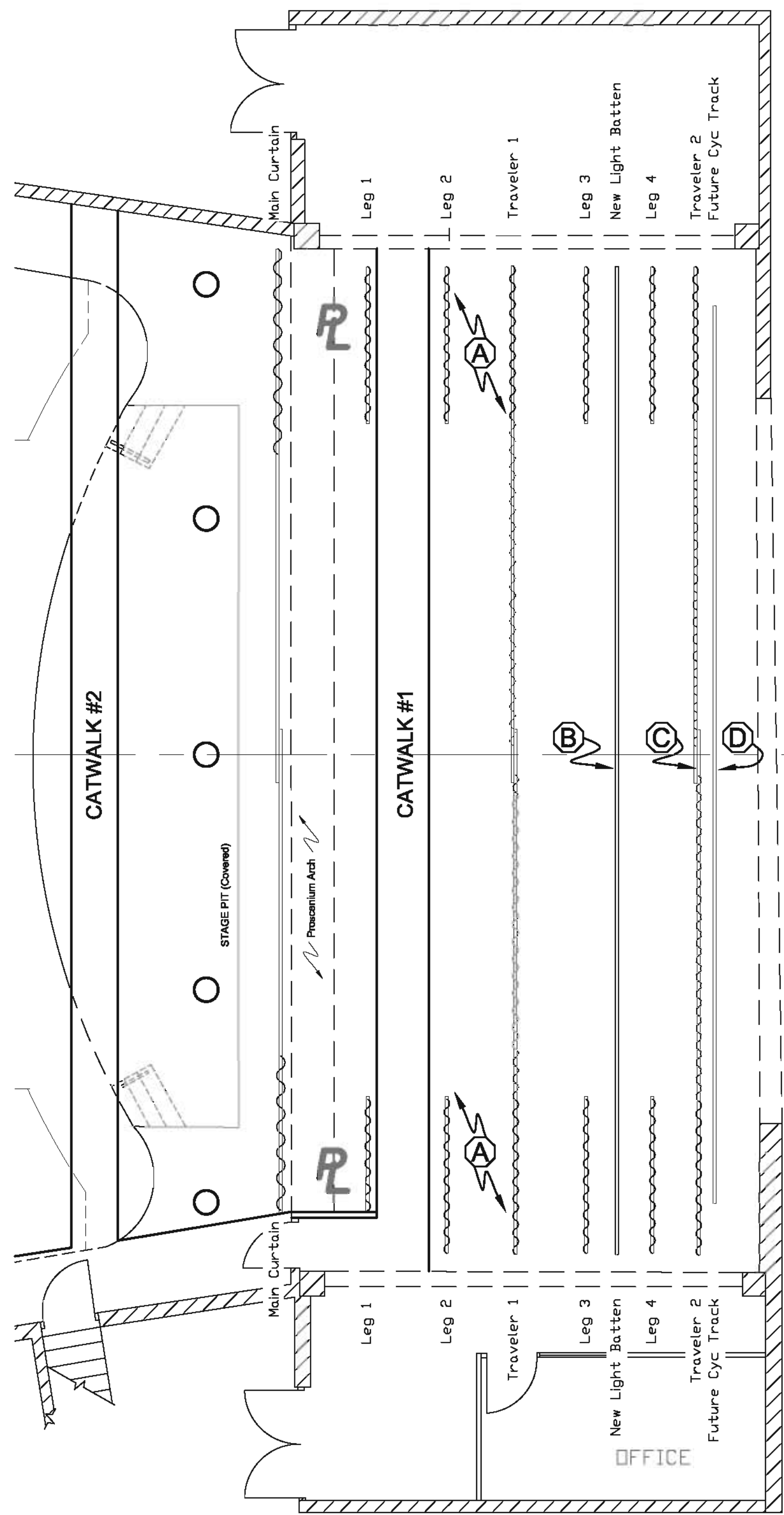
Note: Acoustical Panels and Stage worklights not shown for clarity.



Existing Drapery



Scale:  
3/16" = 1'-0"



Drapery Additions



Scale:  
3/16" = 1'-0"

### NOTES

**ONSTAGE DRAPERY RE-HANG**

**(A)** Swap Current positions of Leg #2 and Traveler #1. For usability of Catwalk 1 Lighting Position. Current configuration completely blocks the direct path of light from the fixture to the stage because the light would have to pass through the steel track.

**(B)** Also create new Dead-hung Lighting Pipe (2" Schedule 40 Black Steel) 55'-0" in length hanging 9' Upstage of Leg #3 and 20' Downstage of Leg #4 At 20'-0" above stage. For Future Cyc Light purchase and use of new circuits Fed From DP-2.

**(C)** Move existing Traveler #2 track, curtain, and all chain and hardware downstage 9'.

**(D)** Purchase new 50' long single-track (one-way pull) Dead hang in current position of Traveler #2 at 20'-0" above stage for future addition of 45' x 20' Seamless White Cyclorama.

All Rigging by Owner.  
Distances are Approximate.

ISSUE/REVISIONS  
OCTOBER 18, 2006

## Visions in Light

2820 East Cove Ct.  
Mansfield, Ohio 45039  
(513) 677-3999  
[info@vilcreations.com](mailto:info@vilcreations.com)

[www.vilcreations.com](http://www.vilcreations.com)



### LIGHTING DESIGN

LEAD DESIGNER: JAMES H. GAGE  
PROJECT MANAGER / ASSISTANT  
DESIGNER: JONATHAN M. FUCHS  
DRAWN BY: JMF

### NOTES:

THIS DRAWING REPRESENTS VISUAL CONCEPTS AND CONSTRUCTION SUGGESTIONS ONLY. IT DOES NOT REPLACE THE KNOWLEDGE AND ADVICE OF A LICENSED ENGINEER. THE LIGHTING DESIGNER/CONSULTANT IS UNQUALIFIED TO DETERMINE THE STRUCTURAL OR ELECTRICAL REQUIREMENTS NECESSARY. ALL INSTALLATION CONCERNS ARE THE RESPONSIBILITY OF THE ELECTRICAL CONTRACTOR AND ARCHITECT DESIGN TEAM.

ANY QUESTIONS SHOULD BE DIRECTED TO COLE + RUSSELL ARCHITECTS.

### DISCLAIMER:

THIS DRAWING IS BASED ON ORIGINAL HAND DRAWINGS FROM 1973. DRAWING DIMENSIONS ARE NOT MEANT TO BE PRECISE, ONLY APPROXIMATIONS. ALL DIMENSIONS AND LENGTHS MUST BE FIELD-MEASURED AND APPROVED BY INSTALLER.

VISIONS IN LIGHT WILL NOT BE RESPONSIBLE FOR ANY MISCALCULATIONS OF DIMENSIONS BASED ON THESE DRAWINGS

THIS DOCUMENT IS THE PRODUCT AND EXCLUSIVE PROPERTY OF COLE + RUSSELL ARCHITECTS, INC. NEITHER THE DOCUMENT NOR THE INFORMATION IT CONTAINS MAY BE COPIED OR USED FOR OTHER THAN THE SPECIFIC PROJECT FOR WHICH IT WAS PREPARED WITHOUT THE EXPLICIT CONSENT OF COLE + RUSSELL ARCHITECTS, INC.

**Cole + Russell Architects**

Architecture  
Engineering  
Interior Design  
Landscape Architecture  
Construction Administration

537 East Pete Rose Way, Suite 200  
Cincinnati, Ohio 45202  
(513) 721-8080

## PRELIMINARY

### NOT FOR CONSTRUCTION

THIS DOCUMENT IS PARTIALLY COMPLETE. THE INFORMATION CONTAINED IS NOT NECESSARILY COORDINATED OR CORRECT. THIS DRAWING IS FOR REVIEW PURPOSES ONLY.

COMMISSION NO.  
**606016**

DATE  
**10-18-06**

TITLE  
**SYCAMORE  
SCHOOL DISTRICT  
SYCAMORE  
HIGH SCHOOL  
DRAPERY / RIGGING:  
EXISTING / ADDITIONS**

SHEET  
**LD 5 OF 7**

# Visions in Light

2820 East Cove Ct.  
Maineville, Ohio 45039  
(513) 677-3999  
info@vlicreations.com  
www.vlicreations.com



## LIGHTING DESIGN

LEAD DESIGNER: JAMES H. GAGE  
PROJECT MANAGER / ASSISTANT  
DESIGNER: JONATHAN M. FUCHS  
DRAWN BY: JMF

### NOTES:

**THIS DRAWING REPRESENTS VISUAL CONCEPTS AND CONSTRUCTION SUGGESTIONS ONLY. IT DOES NOT REPLACE THE KNOWLEDGE AND ADVICE OF A LICENSED ENGINEER. THE LIGHTING DESIGNER/CONSULTANT IS UNQUALIFIED TO DETERMINE THE STRUCTURAL OR ELECTRICAL REQUIREMENTS NECESSARY. ALL INSTALLATION CONCERNS ARE THE RESPONSIBILITY OF THE ELECTRICAL CONTRACTOR AND ARCHITECT DESIGN TEAM.**

ANY QUESTIONS SHOULD BE DIRECTED TO COLE & RUSSELL ARCHITECTS.

### DISCLAIMER:

**THIS DRAWING IS BASED ON ORIGINAL HAND DRAWINGS FROM 1873. DRAWING DIMENSIONS ARE NOT MEANT TO BE PRECISE, ONLY APPROXIMATIONS. ALL DIMENSIONS AND LENGTHS MUST BE FIELD-MEASURED AND APPROVED BY INSTALLER.**

VISIONS IN LIGHT WILL NOT BE RESPONSIBLE FOR ANY MISCALCULATIONS OF DIMENSIONS BASED ON THESE DRAWINGS

THIS DOCUMENT IS THE PRODUCT AND EXCLUSIVE PROPERTY OF COLE + RUSSELL ARCHITECTS, INC. NEITHER THE DOCUMENT NOR THE INFORMATION IT CONTAINS MAY BE COPIED OR USED FOR OTHER THAN THE SPECIFIC PROJECT FOR WHICH IT WAS PREPARED WITHOUT THE EXPRESS CONSENT OF COLE + RUSSELL ARCHITECTS, INC.

**Cole + Russell Architects**



537 East Pete Rose Way, Suite 200  
Cincinnati, Ohio 45202  
(513) 721-8080

# PRELIMINARY

NOT FOR CONSTRUCTION

THIS DOCUMENT IS PARTIALLY COMPLETE. THE INFORMATION CONTAINED IS NOT NECESSARILY COORDINATED OR CORRECT. THIS DRAWING IS FOR REVIEW PURPOSES ONLY.

COMMISSION NO. 606016

DATE 10-18-06

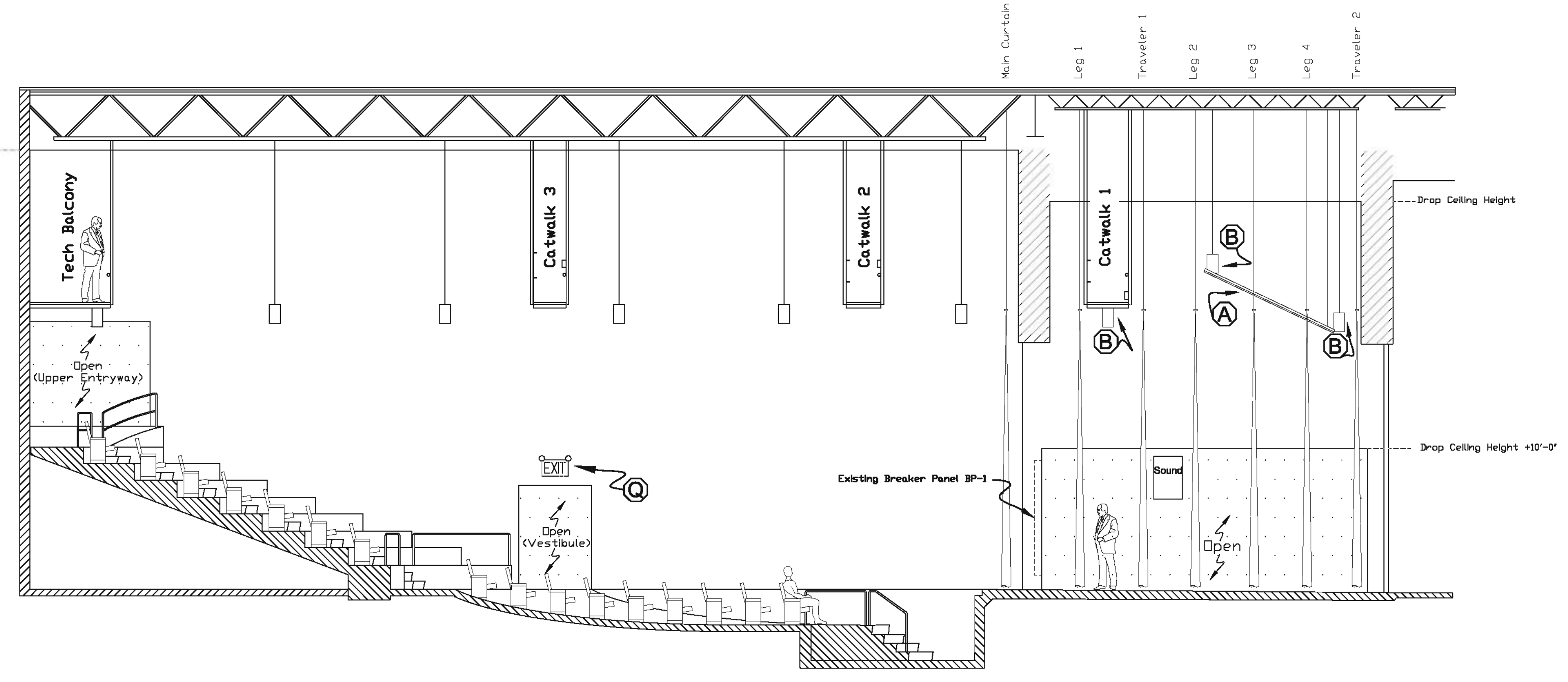
TITLE SYCAMORE SCHOOL DISTRICT SYCAMORE HIGH SCHOOL

SECTION LOOKING NORTH EXISTING / ADDITIONS

SHEET 6 OF 7

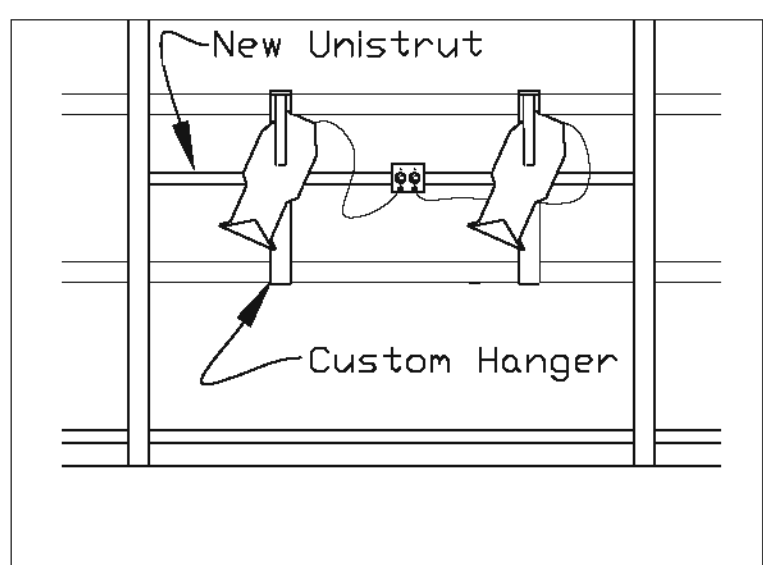
## NOTES

- (A) Remove ALL existing Acoustical Paneling. Owner will designate storage or disposal. Remove all chain and hardware. DEMO BY OWNER.
- (B) Remove all 24 canlights over stage. Save Four (4) for aisle in back of house, to be mounted under tech balcony. See Additions For Catwalk 1 Wiring note.
- (C) Raise Entire Row of Houselights by 6'-6" From Existing Stems.
- (D) Raise Entire Row of Houselights by 3'-0" From Existing Stems.
- (E) New Aisle Lighting - ETC Source Four Jr. with 50° Beam Angle shown for proof of coverage. Mounted with Sieram (M) See Detail.
- (E<sub>1</sub>) New DMX-512 5-Pin Female Universe 2 output Box. Cables here run up to ceiling, back to Optsplitter at Tech Balcony. See Detail.
- (G) New Stage Worklights - Altman PAR64 WFL, 1000w. Mounted with Sieram (M) See Detail.
- (H) New Stage Worklights - Mini-10 500w, w/ Barn Door. Mounted with Sieram (M) See Detail.
- (J) New Dinner Panel - DP2. Mounted next to existing sound rack at a minimum of 6'-4" clearance from stage floor.
- (K) New Circuit Boxes - Two (2) 6-circuit SSRC surface mount 20A Stagepin receptacle panels. To Power Future Cyc Light Units - See Detail.
- (L) Future Cyc Lighting Position.
- (M) New Hangers (Sidearm) - Total 16 -24' Long, 2" O.D. Sch. 40 Black Steel Pipe, Encls Brazed.
- (N) New Circuit Boxes - 6 Circuit Surface Mount SSRC 20A Stagepin Tail Boxes - 18" Tail length. Mounted w/ Pipe Clamps - See Detail. Circuits Duplicate L&R - New Run to DP1.
- (P) New Ghost Light - Altman PAR 38 with 250w PAR38 FLDD, LS-20 Twist Plug. New Circuit run to DP1 - See Detail.
- (Q) ALL EXISTING EMERGENCY LIGHTS AND EXIT SIGNS MUST BE RE-WIRED TO CONSTANT POWER - Current Status in question. Total Number and Placement currently uncertain.

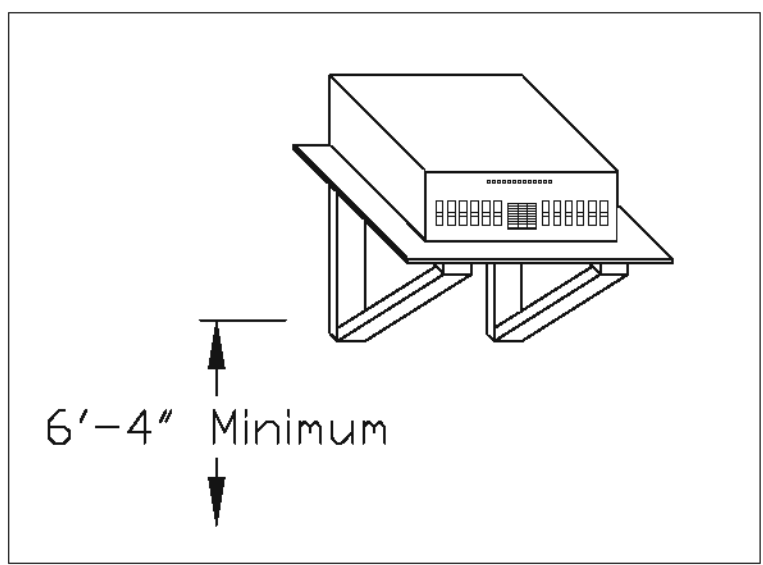


Existing Section View:  
Recommended Demolitions

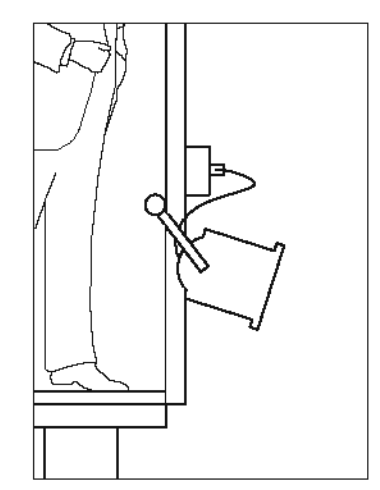
Scale:  
3/16" = 1'-0"



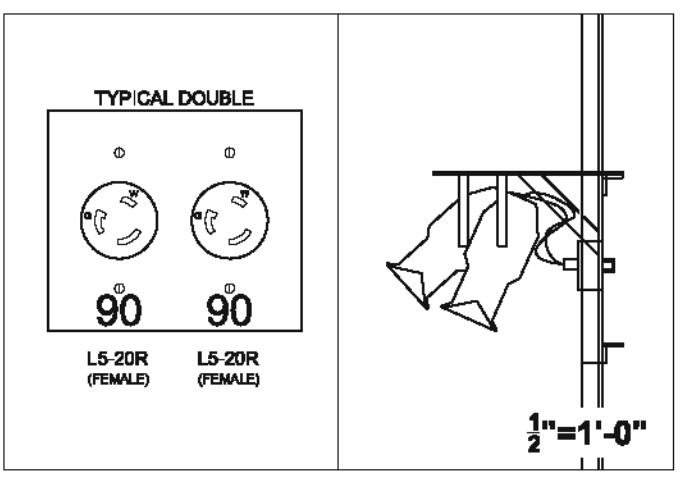
Elevation of Typical Aisle Light Mounting and Circuit (E)



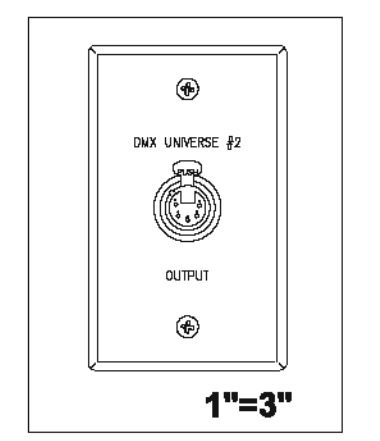
DP2 Mounting Platform Suggestion (J)



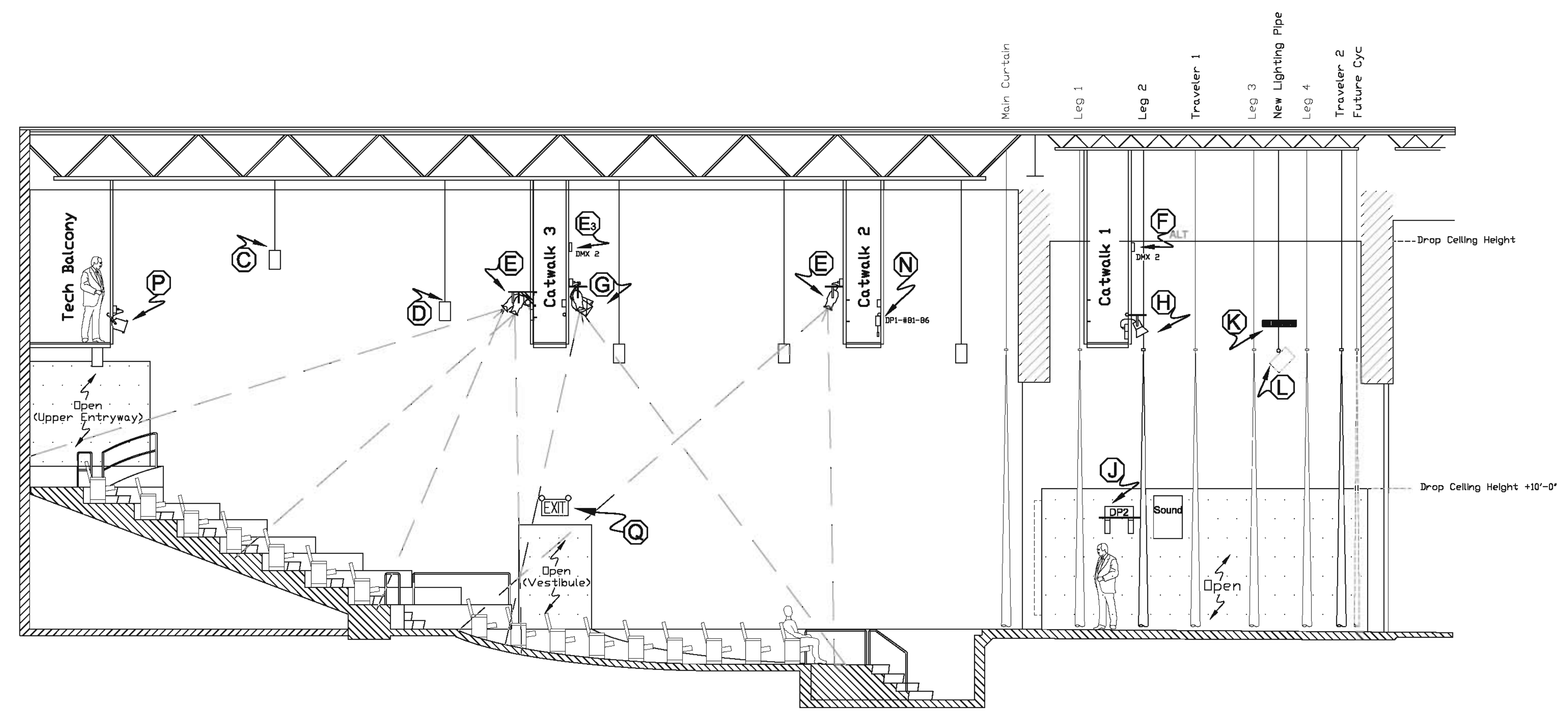
New Ghost Light (P)



Aisle Light Mounting and Double Outlet Box (E)

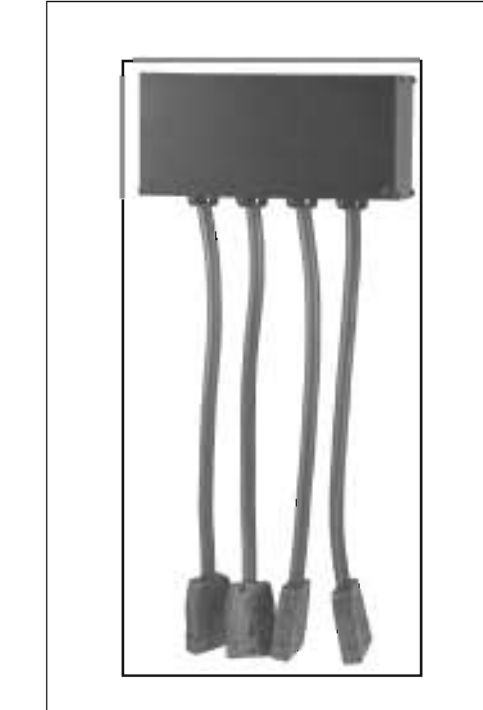


DMX Output (F)

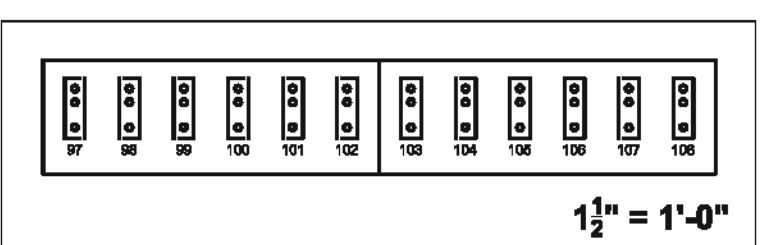


Revised Section View:  
Recommended Additions

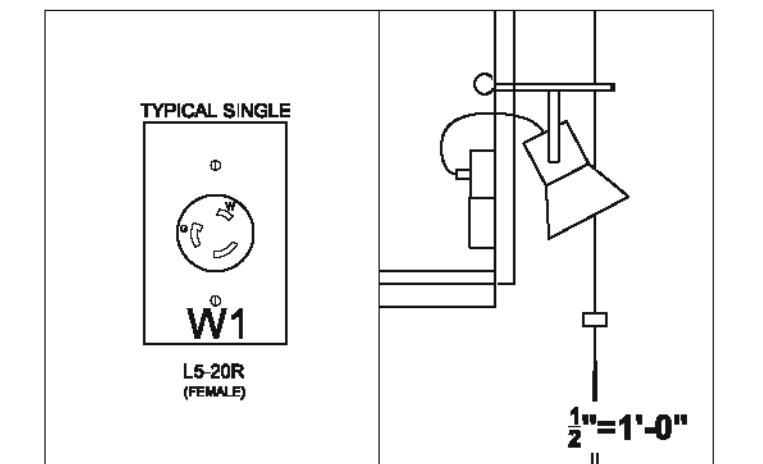
Scale:  
3/16" = 1'-0"



SSRC Surface Mount Box with Tails (4 shown) (N)



New 12-ckt Wall Box (K)



Stage Work Light Mounting and Single Outlet Box (H)

**EQUIPMENT ADDITIONS LIST:**

**To be purchased and installed by EC:**

- 96 Channel Dimmer Rack – 2.4kW per Dimmer, 800µS rise time: EDI-MX Mark 10 Or Equivalent Strand or ETC AS EQUAL – Manufacturer must match #5
- New 300 Amp Disconnect Switch for #1 Feed (to Replace 200A switch)
- Five (5) 2-button (on/off) Entry Stations – mfr match #1  
i.e. EDI A300 Designer Series Wall Plates #D300
- Two (2) 3-button (on/off/lockout) Entry Stations – Match #3
- 12 Channel Dimmer Rack – 2.4kW per Dimmer, 800µS rise time: EDI-DIMMEX-12-2 Or Equivalent Strand or ETC AS EQUAL – Manufacturer must match #1
- One (1) 12-Circuit surface-mount Stagepin (2P&G) receptacle box: SSRC SM series with flush receptacles. or Two (2) 6-circuit boxes. SM-6-2PGFL
- Two (2) New 6" Recessed Can / Egress Lights – Halo H7T-30 PAT Or Equivalent Kurt Versen or Prescolite
- Work / Egress Lights: Twenty-one (21) L5-20R Twistlock Receptacles to be mounted in Six (6) two-gang electrical boxes and Nine (9) single-gang electrical boxes.
- Wiring to be determined by Engineer.
- New Aisle Light Hangers constructed as outlined in extra Hanger Note.

**To be purchased by owner/district and installed by owner:**

- Twelve (12) Aisle Light Fixtures: ETC Source Four Jr. 50° 375w, HPL 375/115X – 1000hr. Or Equivalent Strand or Altman. Total Lamps 12+1 Spare (13)
  - Four (4) Front Stage Work Lights: Altman PAR64 1000w, Q1000PAR64/WFL – 4000hr. Or Equivalent City Theatrical or L&E. Total Lamps 4+1 Spare (5)
  - Four (4) Over Stage Work Lights: Altman Mini-10 w/ Barndoors 500w, FCL Q500 T3/CL – 2500hr. Or Equivalent Strand, L&E, or City Theatrical. Total Lamps 4+1 Spare (5)
  - One (1) Front Stage Ghost Light: Altman PAR38 MSB, 250w PAR38 – 4500hr Or Equivalent L&E or City Theatrical. Total Lamps 1+1 Spare (2)
- All above listed to be unpacked, lamped, and installed by owner  
Items must include C-clamp, safety cable  
L5-20 Twistlock plugs to be installed by mfr prior to shipping
- 25+3 Spare 250w PAR38 Capsyrite 4500hr (Sylvania) Lamps
  - 13+2 Spare 90w PAR38 Halogen 2000hr (Phillips) Lamps
  - 8+2 Spare Spiral 9w 2700°K Self-Balasting Compact Fluorescent Med. Screw Base (MSB) (TCP #180009) Lamps

ADDITIONAL ITEMS MAY BE SPECIFIED BY ENGINEER AS PER WIRING NEEDS

HANGER NOTE: New Aisle Light Hangers:  
Constructed of 2"x ¼" Flat Steel, Welded to shape  
Fixture mounting hole drilled prior, - ⅝" Dia., provide hardware  
Bracket mounting holes drilled onsite-⅝" Dia., provide hardware  
Build 10 for ETC Source Four Jr. on West side of catwalks

For 2 ETC Source Four Jr. on East side:  
Provide 2' length 2" I.D. Sch 40 Iron Pipe and Fixed Perpendicular  
pipe clamps (aka Cheeseborougs) – total 2

**CIRCUIT LAYOUT CHART:**

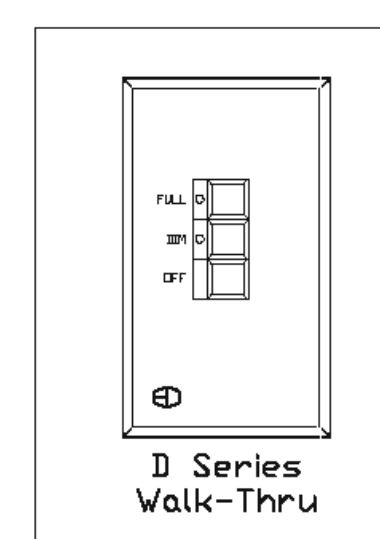
**NOTE: Circuits 1-79 Exist - Re-use existing wiring  
Also Houselights DP1-A thru L exist - Re-use wiring**

Dimmer Distributions:				
Source	Dimmer #	Rating	Location	Description
DP1	1-10	20A	Catwalk 1 SR	Stagepin Tails
DP1	11-20	20A	Catwalk 1 SL	Stagepin Tails
DP1	21-44	20A	Catwalk 2	Stagepin Tails
DP1	45-68	20A	Catwalk 3	Stagepin Tails
DP1	69-77	20A	Stage	Floor Pockets
DP1	78, 79	20A	Tech Balcony	Wall Pockets
DP1	80	20A	Tech Balcony	New Ghost Light
DP1	81-86	20A	Catwalk 2	Alternate New Circuit Boxes
Duplicated HL & HR				
DP1	87	20A	Catwalk 3	House left work lights
DP1	88	20A	Catwalk 3	House right work lights
DP1	89	20A	Catwalks 2,3	House left Aisle Lights
DP1	90	20A	Catwalks 2,3	House right Aisle Lights
DP1	91	20A	House	House Lights DP1-F, G, H
DP1	92	20A	House	House Lights DP1-C, D, E
DP1	93	20A	House / under TB	House Lights DP1-A, B
DP1	94	20A	House	House Lights DP1-J, K, L, M aka Egress E1-2, 4, 5
Also Emergency Egress - Generator wired				
DP1	95	Switch	N/A	To Generator Constant Power
DP1	96	Switch	N/A	To Generator Constant Power
DP2	97-108	20A	Onstage SR wall	Future Cyc Lighting Units

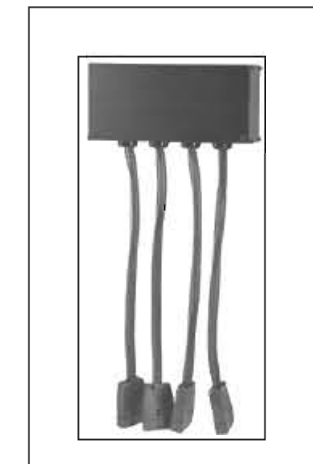
Consistent Dimmer Loads: (All other stage circuit dimmers vary usage)				
Source	Dimmer	# Fixt	Type & Wattage	Total Load
DP1	80	1	PAR 38 250w FL	250w
DP1	87	2	PAR64 1000w	2000w
DP1	88	2	PAR64 1000w	2000w
DP1	89	6	Source Four Jr 50° 375w	2250w
DP1	90	6	Source Four Jr 50° 375w	2250w
DP1	91	9	PAR 38 250w FL	2250w
DP1	92	9	PAR 38 250w FL	2250w
DP1	93	7	PAR 38 90w FL	1380w
3 PAR 38 250w FL				
DP1	94	4	PAR 38 90w FL	960w
4 PAR 38 250w FL				



#1 - EDI 96 Rack



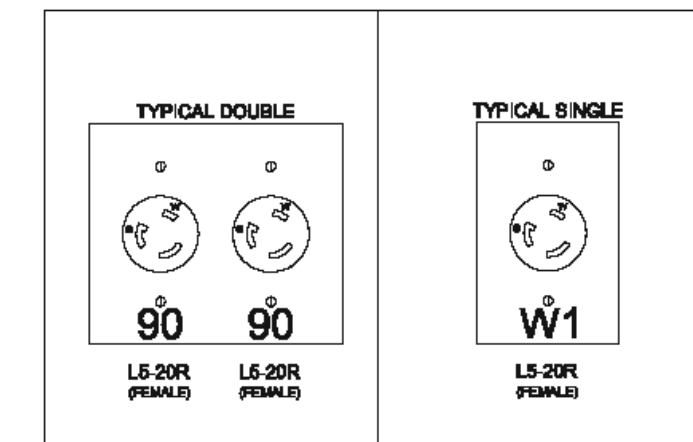
#3 - 3-Button Entry Station



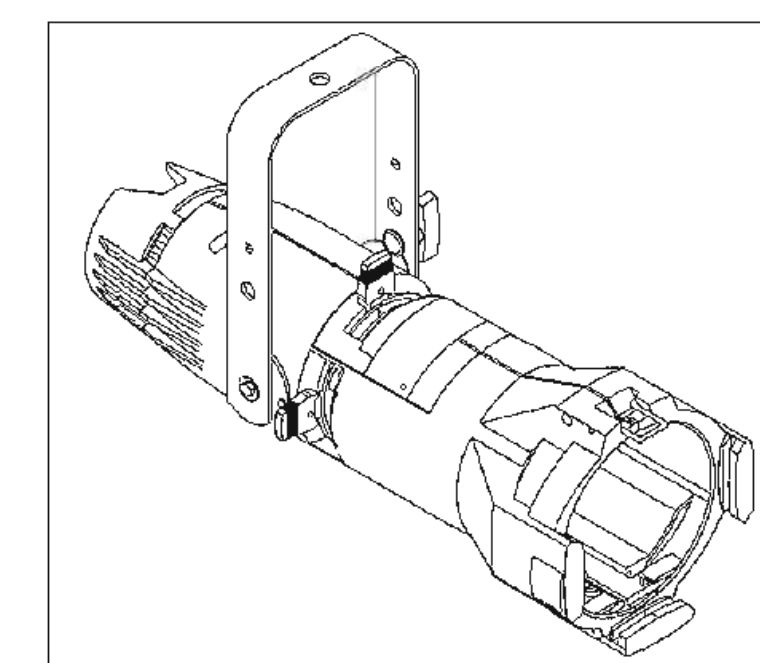
#6 - SSRC Surface Mount Box with Tails (4 shown)



#5 - DP2 - EDI DIMMEX-12



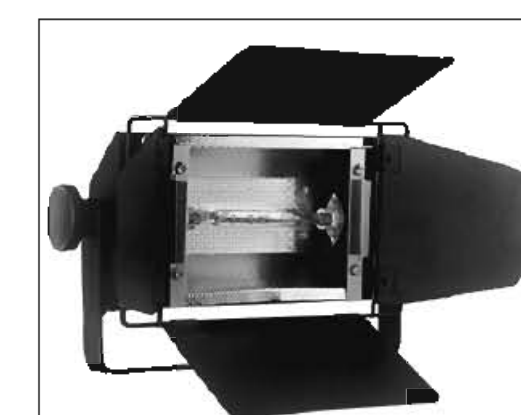
#8 - L5-20R Twistlock Receptacles



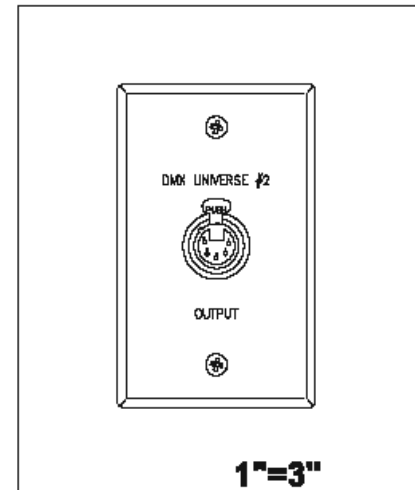
#10 - ETC Source Four Jr.



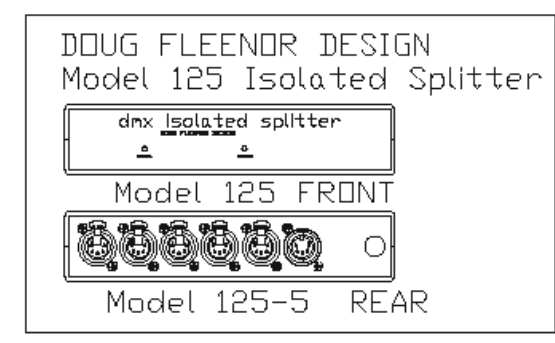
#11 - Altman PAR64



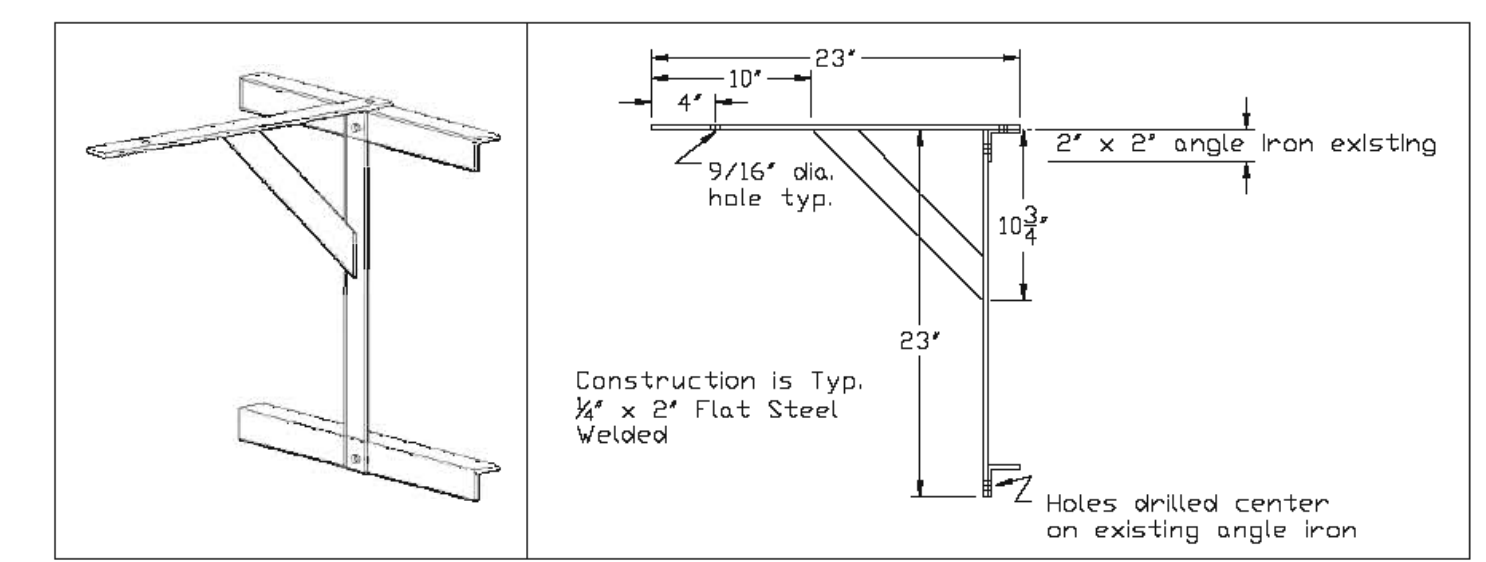
#12 - Altman Mini-10



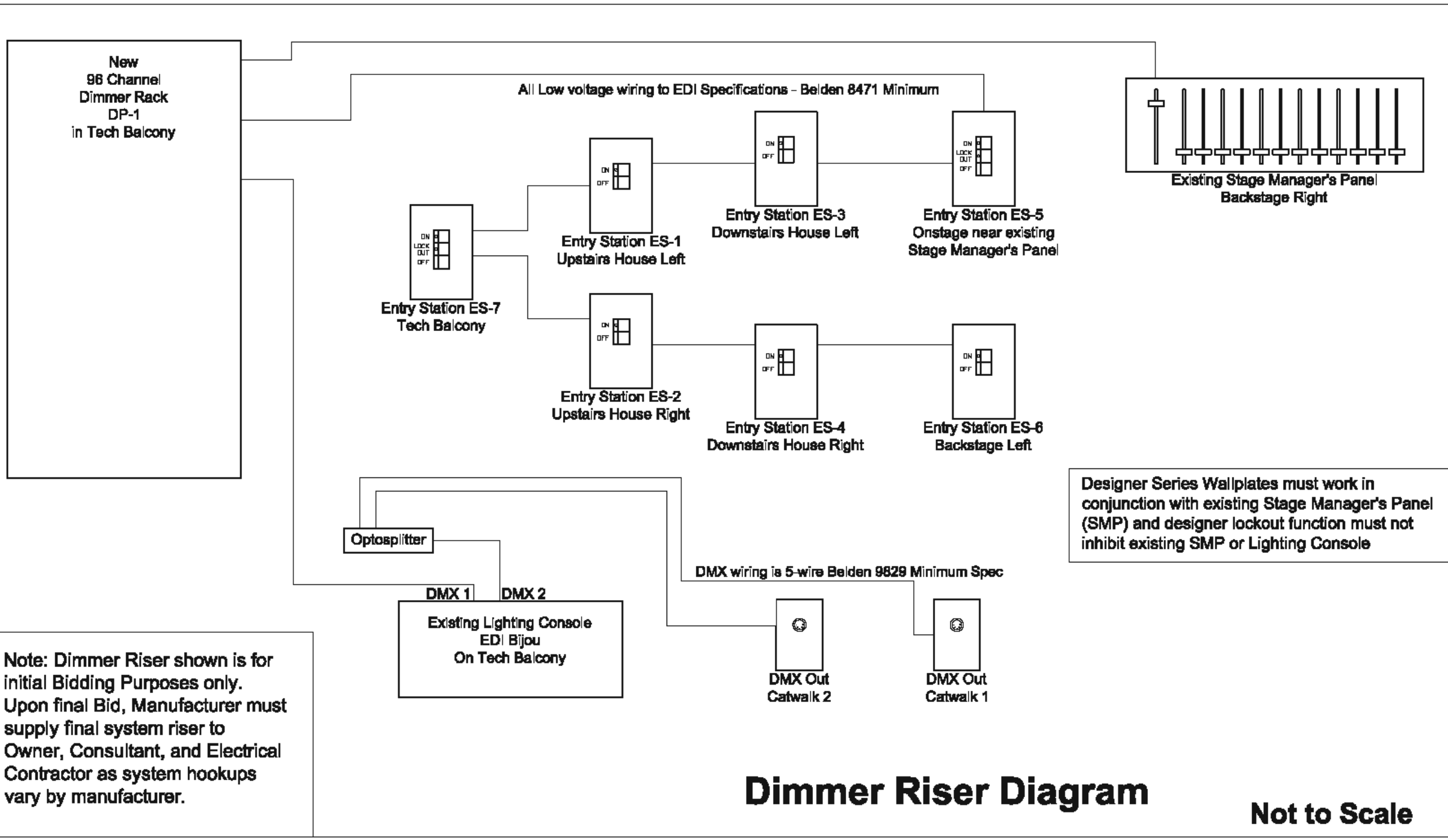
#20a - Typical DMX Output



#20b - Optosplitter



Detail view of new Aisle Light Hanger (Total 10)



Dimmer Riser Diagram

Not to Scale

Note: Dimmer Riser shown is for initial Bidding purposes only. Upon final Bid, Manufacturer must supply final system riser to Owner, Consultant, and Electrical Contractor as system hookups vary by manufacturer.

**Visions in Light**

2820 East Cove Ct.  
Mansfield, Ohio 45039  
(513) 677-3999  
info@visionsinc.com

www.visionsinc.com



**LIGHTING DESIGN**  
LEAD DESIGNER: JAMES H. GAGE  
PROJECT MANAGER / ASSISTANT DESIGNER: JONATHAN M. FUCHS  
DRAWN BY: JMF

**NOTES:**

THIS DRAWING REPRESENTS VISUAL CONCEPTS AND CONSTRUCTION SUGGESTIONS ONLY. IT DOES NOT REPLACE THE KNOWLEDGE AND ADVICE OF A LICENSED ENGINEER. THE LIGHTING DESIGNER/CONSULTANT IS UNQUALIFIED TO DETERMINE THE STRUCTURAL OR ELECTRICAL REQUIREMENTS NECESSARY. ALL INSTALLATION CONCERNS ARE THE RESPONSIBILITY OF THE ELECTRICAL CONTRACTOR AND ARCHITECT DESIGN TEAM.

ANY QUESTIONS SHOULD BE DIRECTED TO COLE + RUSSELL ARCHITECTS.

**DISCLAIMER:**

THIS DRAWING IS BASED ON ORIGINAL HAND DRAWINGS FROM 1973. DRAWING DIMENSIONS ARE NOT MEANT TO BE PRECISE, ONLY APPROXIMATIONS. ALL DIMENSIONS AND LENGTHS MUST BE FIELD-MEASURED AND APPROVED BY INSTALLER.

VISIONS IN LIGHT WILL NOT BE RESPONSIBLE FOR ANY MISCALCULATIONS OF DIMENSIONS BASED ON THESE DRAWINGS

THIS DOCUMENT IS THE PRODUCT AND EXCLUSIVE PROPERTY OF COLE + RUSSELL ARCHITECTS, INC. NEITHER THE DOCUMENT NOR THE INFORMATION IT CONTAINS MAY BE COPIED OR USED FOR OTHER THAN THE SPECIFIC PROJECT FOR WHICH IT WAS PREPARED WITHOUT THE EXPLICIT CONSENT OF COLE + RUSSELL ARCHITECTS, INC.

**Cole + Russell Architects**



537 East Pete Rose Way, Suite 200  
Cincinnati, Ohio 45202  
(513) 721-8080

**PRELIMINARY**  
NOT FOR CONSTRUCTION

THIS DOCUMENT IS PARTIALLY COMPLETE. THE INFORMATION CONTAINED IS NOT NECESSARILY COORDINATED OR CORRECT. THIS DRAWING IS FOR REVIEW PURPOSES ONLY.

COMMISSION NO. 606016

DATE 10-18-06

TITLE SYCAMORE SCHOOL DISTRICT SYCAMORE HIGH SCHOOL

ADDITION DETAILS, DATA, PAPERWORK

SHEET 7 OF 7